

**REPORT ON REEF BALL PROJECT, CABO DE LA VELA, COLOMBIA.
(UNITS DEPLOYED IN MAY TO JUNE, 2003)**

MAY 2 OF 2006

TERRAZUL FOUNDATION

DIEGO MORENO

ADDRESS 1:

AVE. 19 No. 118– 30, OFFICE: 609, BOGOTÁ, COLOMBIA.

PH: + 57 1 6583433

FACSIMILE +57 1 6296583

ADDRESS 2:

AVE. 1 No. 4-59, OFFICE: 401, RIOHACHA, COLOMBIA.

PH: +57 5 7286513



Photo 1: (Above) Shot from bay ball located near wreck. Photo 2: (Below) Visual census of bay balls in zone known as wreck. Both taken late last year (2005).



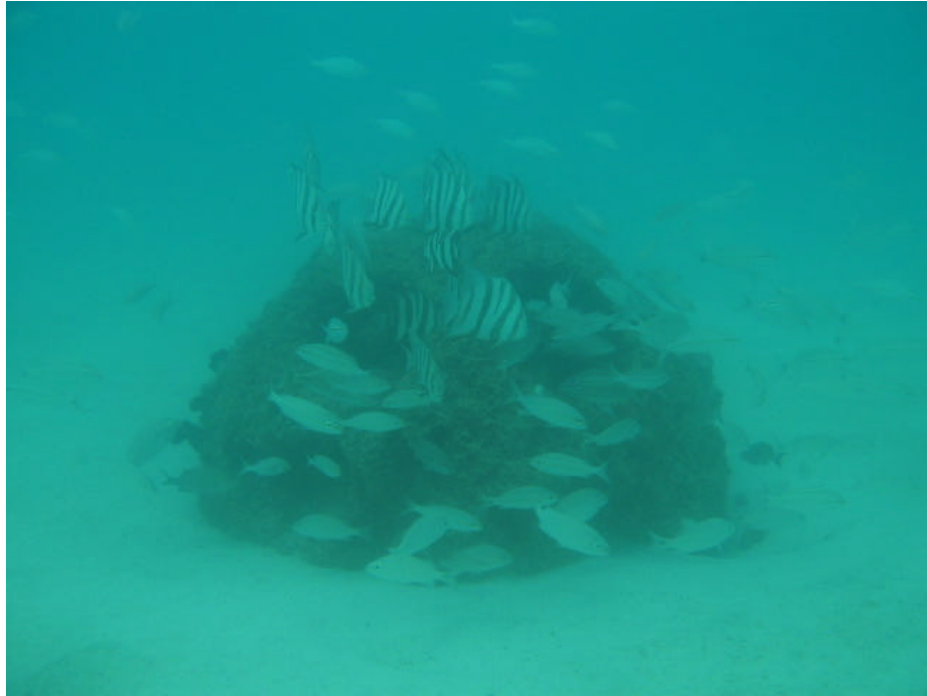


Photo 3: (Above) Bay ball with subadult fish at Pujurú Location.
Photo 4: As above. Both in late 2005.

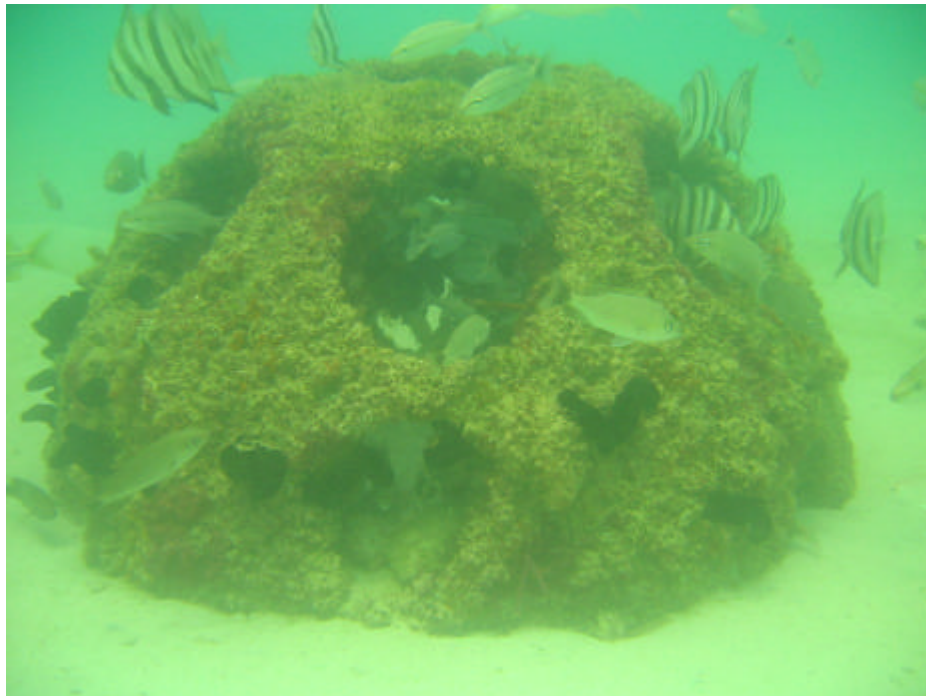




Photo 5: (Left) Fully vegetated Reef Ball becoming great refuges for small sized fish, May 2004. Photo 6: (right) Close shot of reef ball side hole showing soft coral and subadult fish. Both taken at Pujurú location.

Table 1. Fish species recorded in underwater observation of Reef Ball Project, Colombia.

Species name	Family	Common name (Spanish)
<i>Caranx</i> sp	CARANGIDAE	Jurél
<i>Chloroscombrus chrysurus</i>	CARANGIDAE	Casabito
<i>Elagatis bipinnulata</i>	CARANGIDAE	Se desconoce
<i>Seriola</i> sp	CARANGIDAE	Jurél
<i>Chaetodon ocellatus</i>	CHAETODONTIDAE	Piedrero
<i>Urolophus jamaicensis</i>	DASYATIDAE	Raya
<i>Diodon hystrix</i>	DIODONTIDAE	Globo
<i>Echeneis neucratoides</i>	ECHENEIDIDAE	Pega
<i>Chaetodipterus faber</i>	EPHIPPIDAE	Colador
<i>Haemulon aerolineatum</i>	HAEMULIDAE	Boca colorada
<i>Haemulon plumieri</i>	HAEMULIDAE	Boca colorada
<i>Haemulon sciurus</i>	HAEMULIDAE	Corocoro rayado
<i>Haemulon</i> sp	HAEMULIDAE	Corocoro
<i>Haemulon steindachneri</i>	HAEMULIDAE	Washi
<i>Panulirus argus</i>	PALINURIDE	Langosta
<i>Pomacentrus</i> sp	POMACENTRIDAE	Se desconoce
<i>Equetus</i> sp	SCIANIDAE	Se desconoce

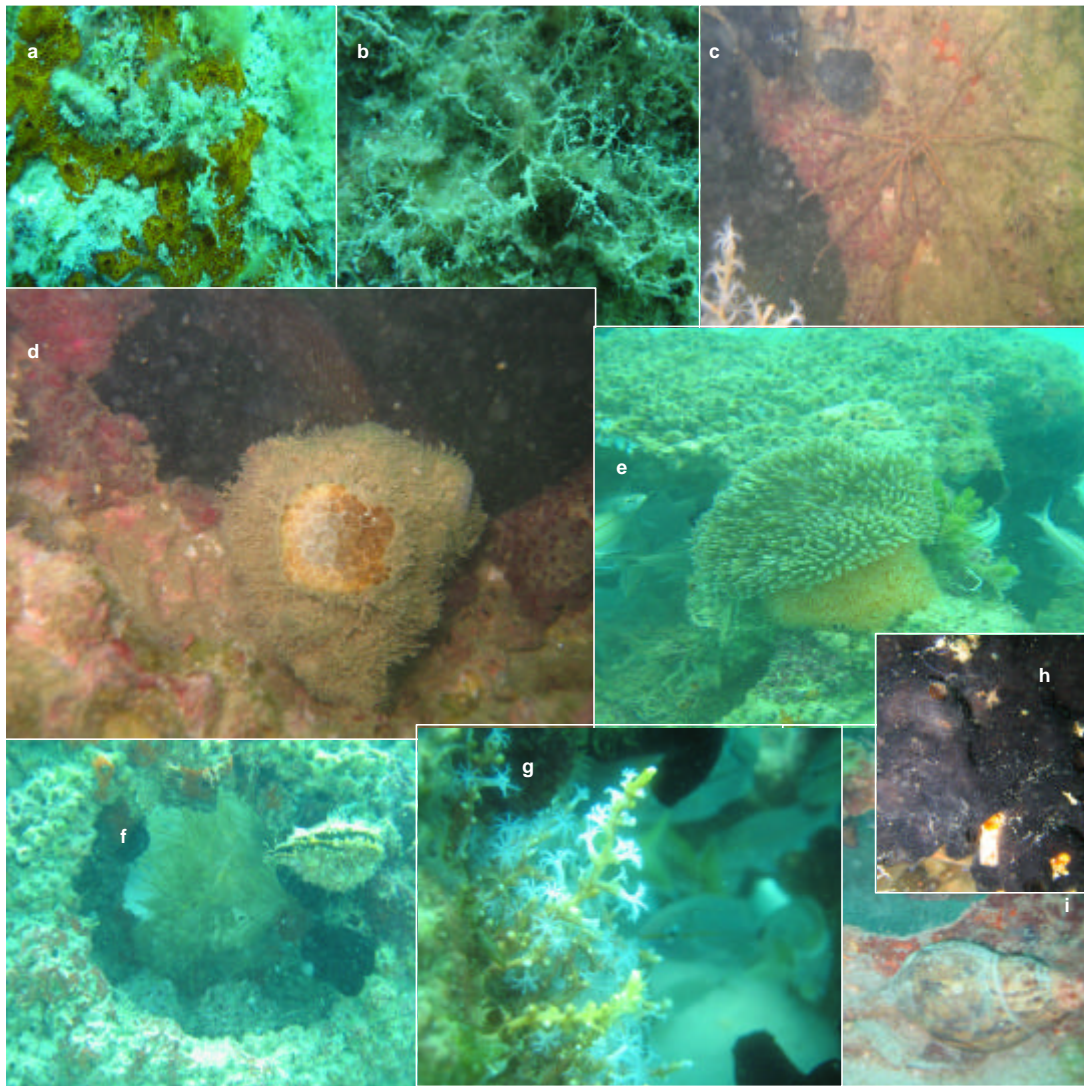


Figure 1. This group of photos show the following sessile organisms observed in association to Reef Balls from the Wreck location and Pujurú location: a.) encrusting sponge. b.) Alga .c.) Yellow stripe crab. d.) Hematypic coral. e.) Anemone. f.) Hydroid. g.) Telestecean. h.) Tunicate. i.) Snail. Photos taken between late 2004 and first semester of 2005.

Table 2. Description of sessile organisms associated to Reef Balls.

Taxa	Common Name	Observations
Phylum: Porifera Class: Demospongiae	encrusting sponge	Inhabits reef walls, prefers protected zones with shelter.
Phylum: Mollusca Class: Gastropoda Subclass: Prosobranchia Familia: Fascioliariidae	Snail	Inhabits sandy bottoms and grass.
Phylum: Arthropoda Class: Crustácea Orden: Decapoda Familia: Majidae	Yellow stripe crab	Large variety of habitats, includes reefs.
Phylum: Chordata Class: Ascidiacea	Encrusting tunicate	Inhabits reefs and encrusts protected areas
Phylum: Cnidaria Class: Anthozoa Subclass: Octocorallia Orden: Alcyonanea*	Telestecean	First to inhabit reef balls.
Phylum: Cnidaria Class: Anthozoa Subclass: Hexacorallia	Hematypic coral	Yet to be determined
Phylum: Cnidaria Class: Anthozoa Orden: Actiniaria	Anemone	
Phylum: Cnidaria Class: Hydrozoa Orden: Hydroida	Feather Hydroyd	

* Traditio nally as Telestacea